

ONDA SECTIS

The background is a light teal color with a complex, symmetrical pattern. It features several organic, wavy shapes in a darker teal or brownish-green. In the center, there is a circular motif resembling a gear or a flower with eight petals, surrounded by smaller circles. The overall design is intricate and layered.

2nd project – Print design

By Patricia Burgaya

Creative portfolio

A large, irregular, textured orange-brown shape, resembling a brushstroke or a piece of fabric, is located in the bottom right corner. It has a mottled, fibrous texture with varying shades of orange and brown.

Collection synopsis

Soundwaves, Windwaves. The waves of one's feelings. The waves of the water. Waves. Curves. Everything consists or is measured in waves.

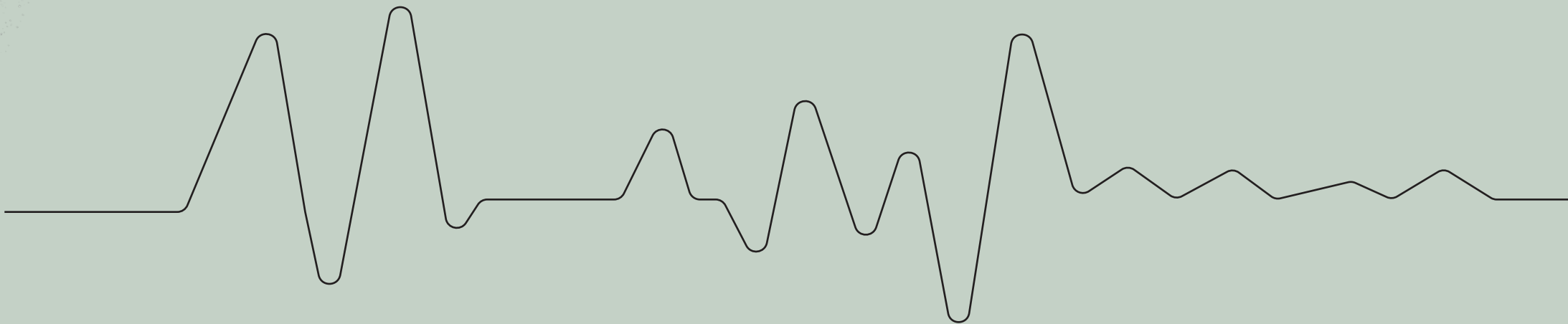
What if we took the waves, and transfered them to a woman's body?

Let us do that. Let us discover that also the physical body is made up around waves and curves. The curves formed by a womans breast, or hips.

The shoulders, and wrists. Her heartbeat. Let us see what we can do only with the soft. natural waves of the body. Let us make it a dogma.

NO SHARPNESS. ONLY USE CURVED LINES AND CORNES.

Let us just follow the cut of a wave. Onda Sectis.



Moodboard



*The cut of the curves, high sophisticated waists,
and flares are dominating my collection.*



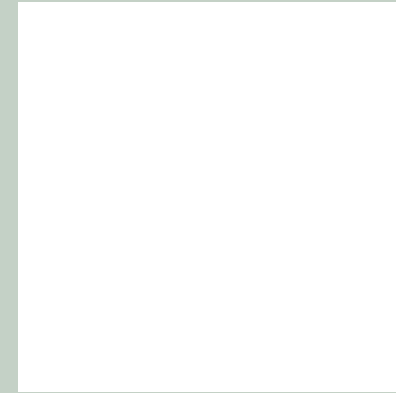
Color-chart



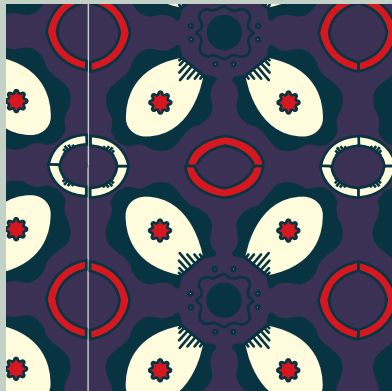
Emerald green



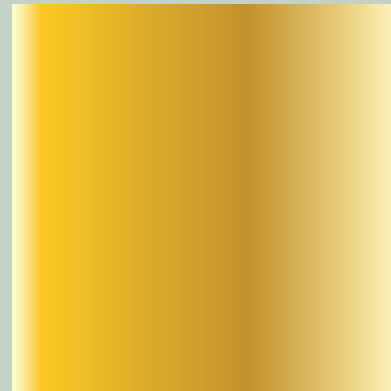
Bold black



Winter white



Print #1



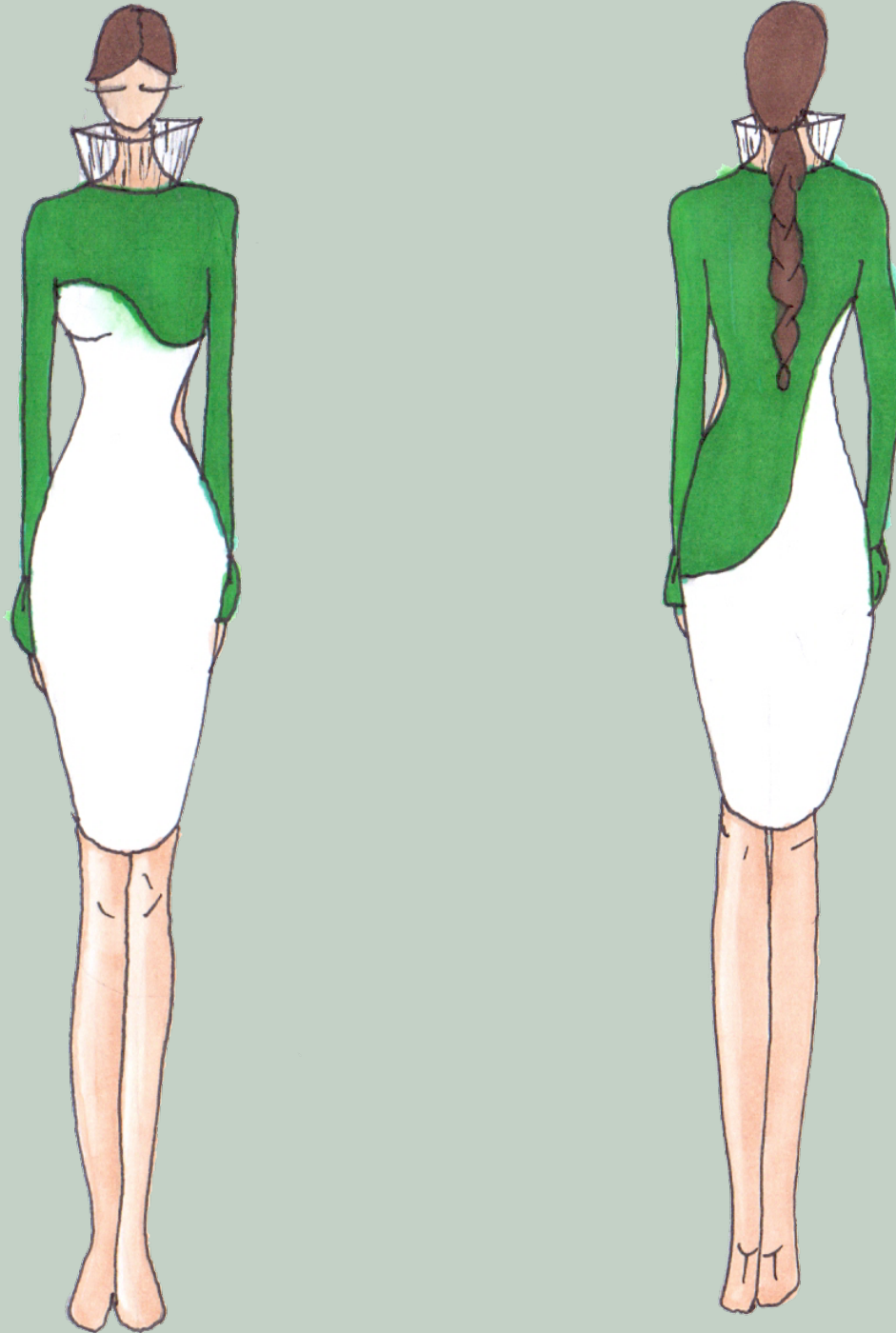
Print #2

Silhouette 1



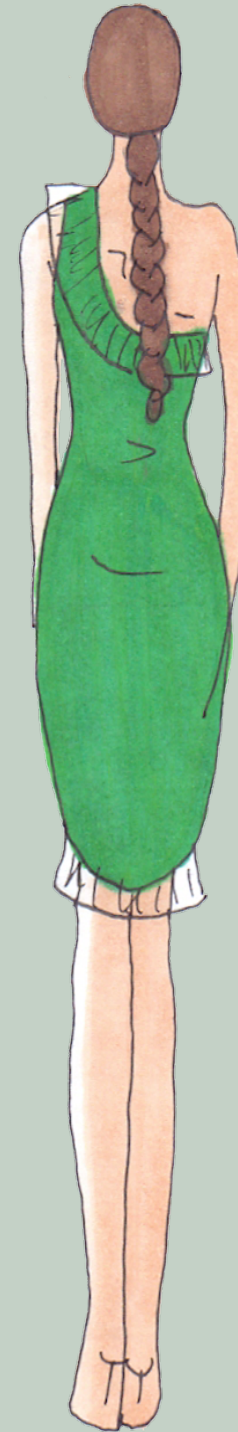
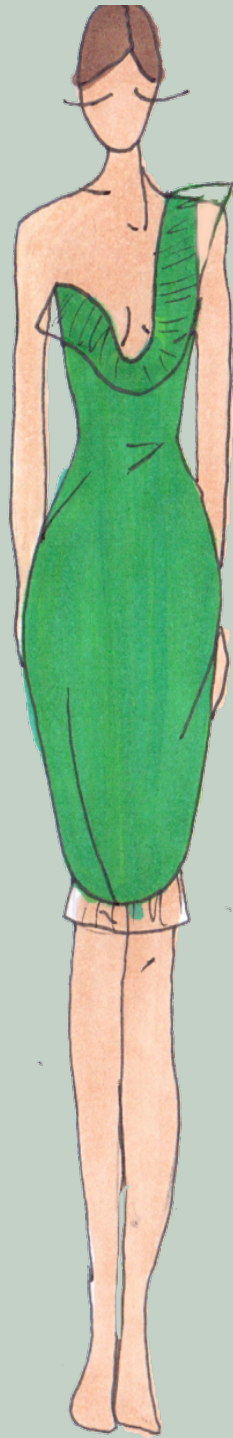
STYLE 1&2

Silhouette 2



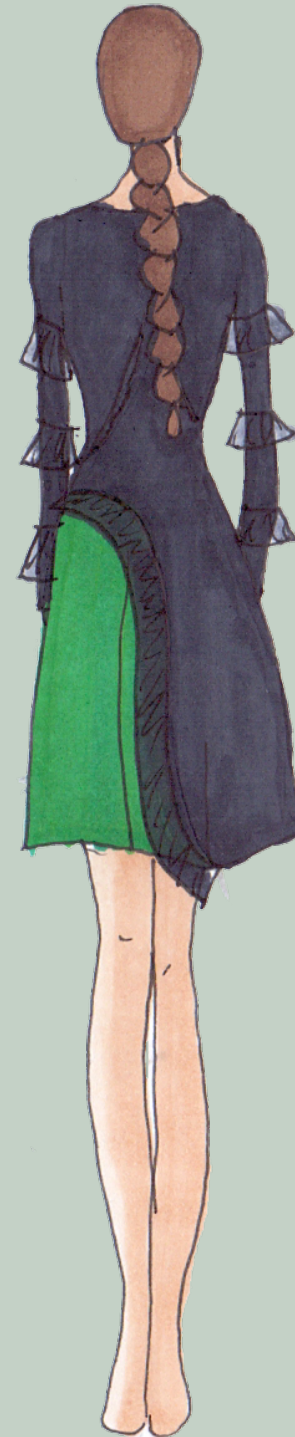
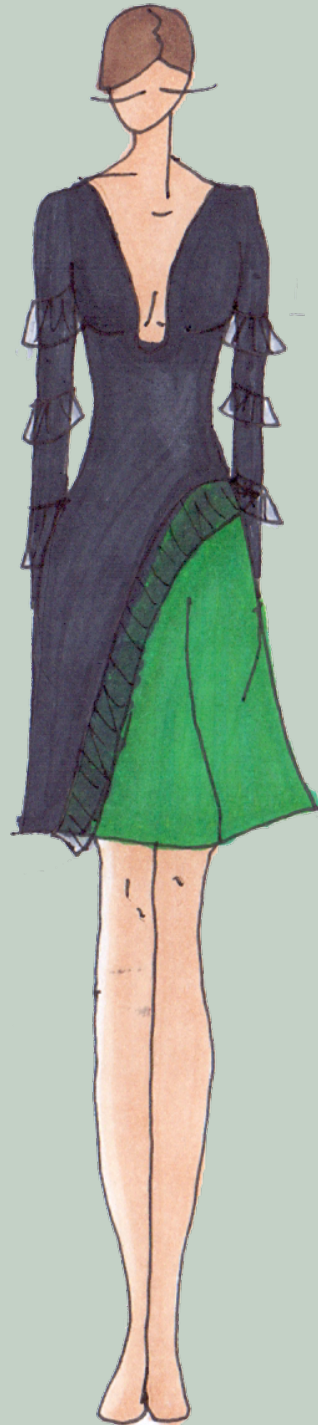
STYLE 3

Silhouette 3



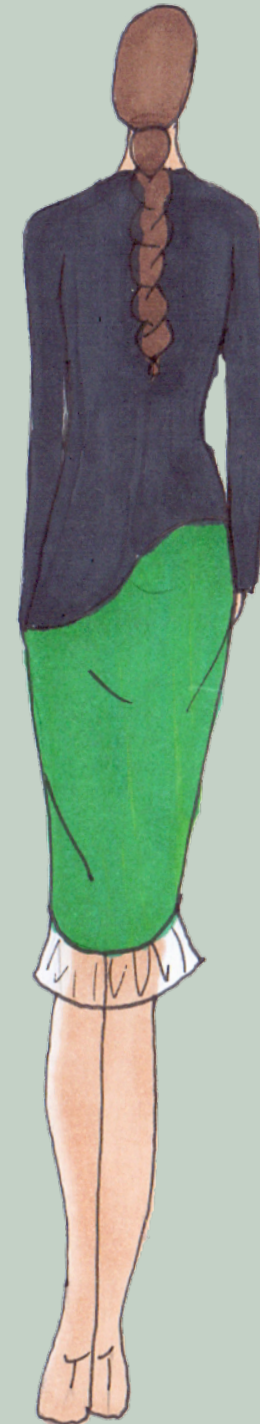
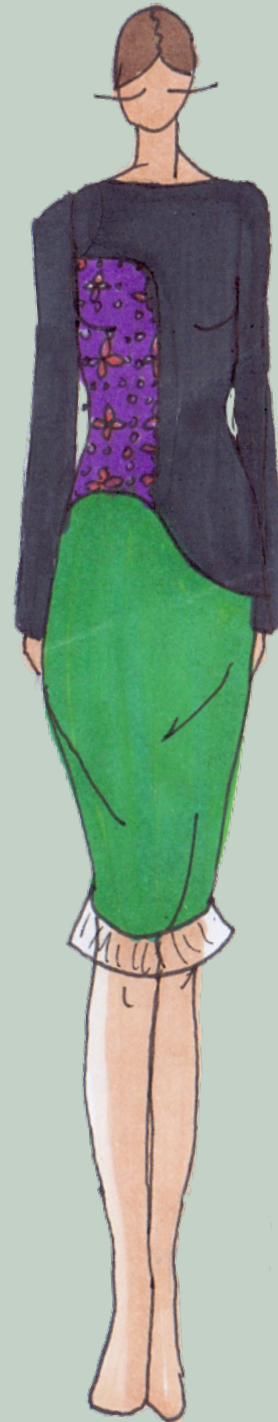
STYLE 4

Silhouette 4



STYLE 5

Silhouette 5



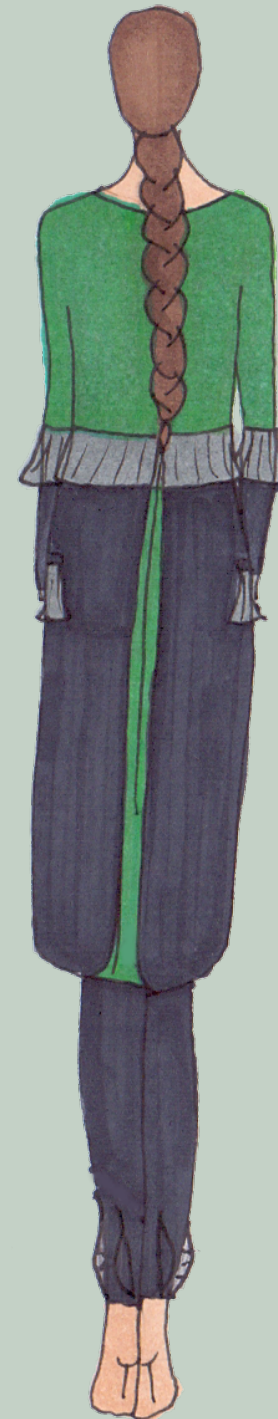
STYLE 4&6

Silhouette 6



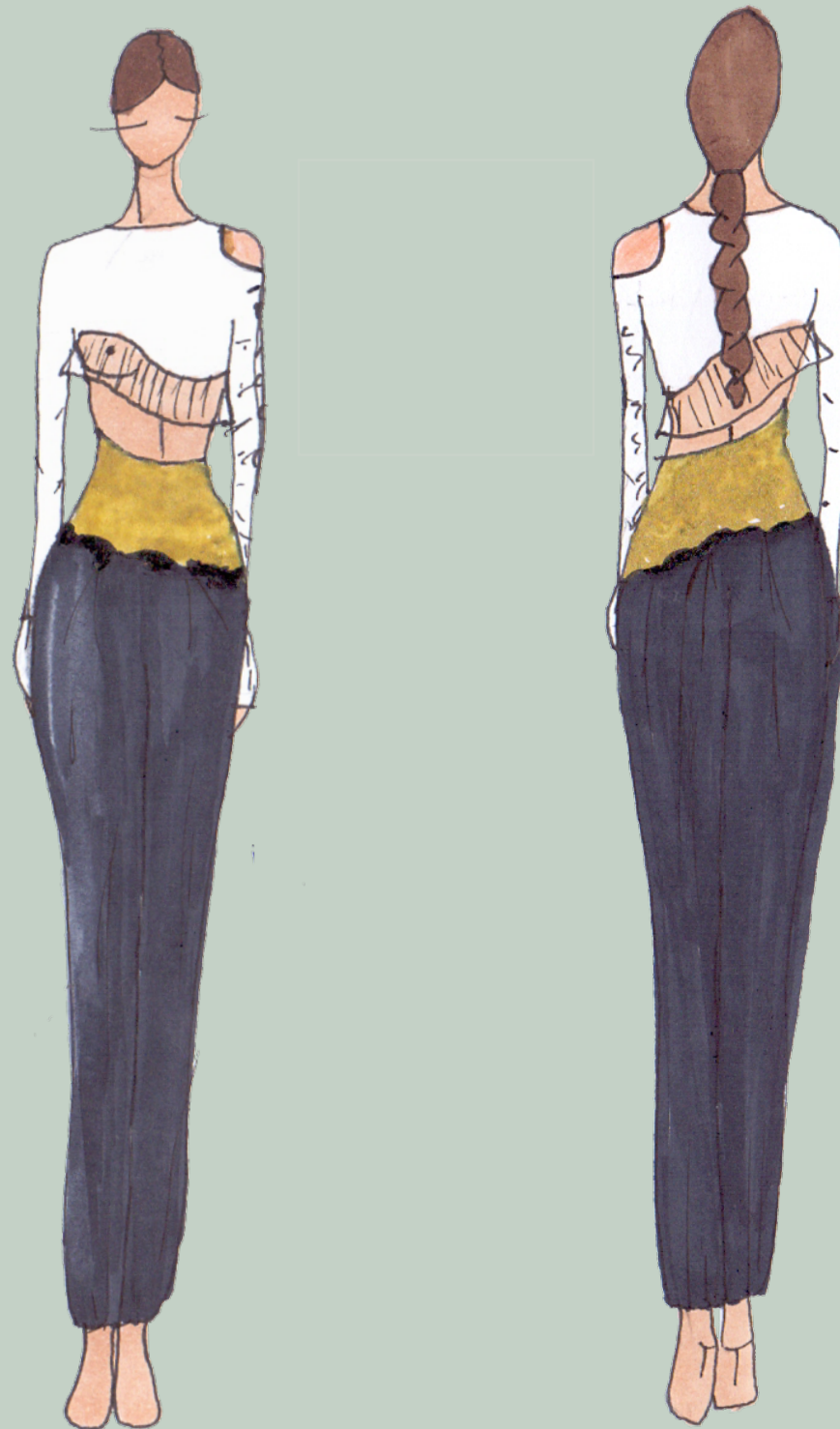
STYLE 2&7

Silhouette 7



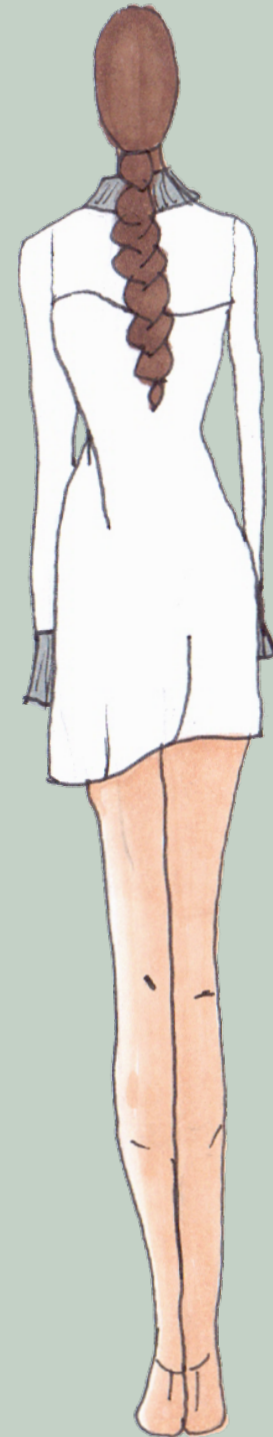
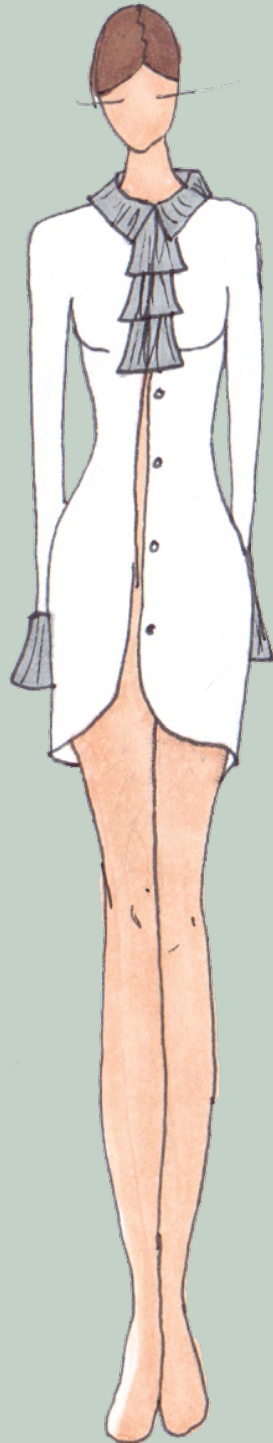
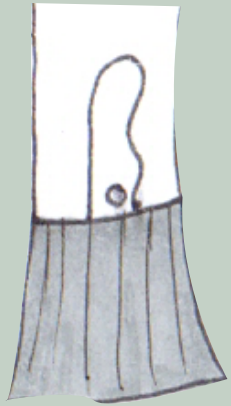
STYLE 7,8&9

Silhouette 8

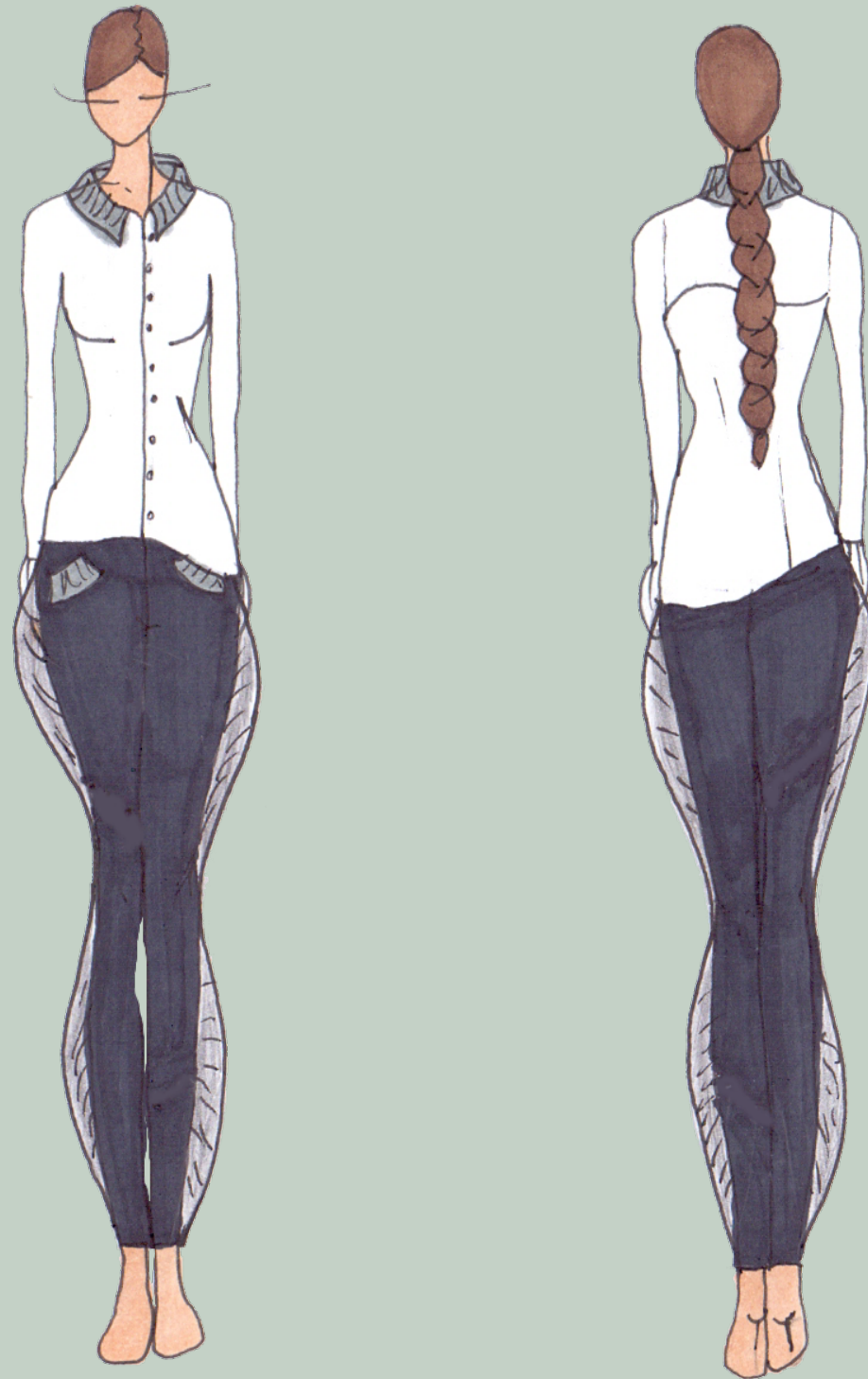


STYLE 10&11

Detail

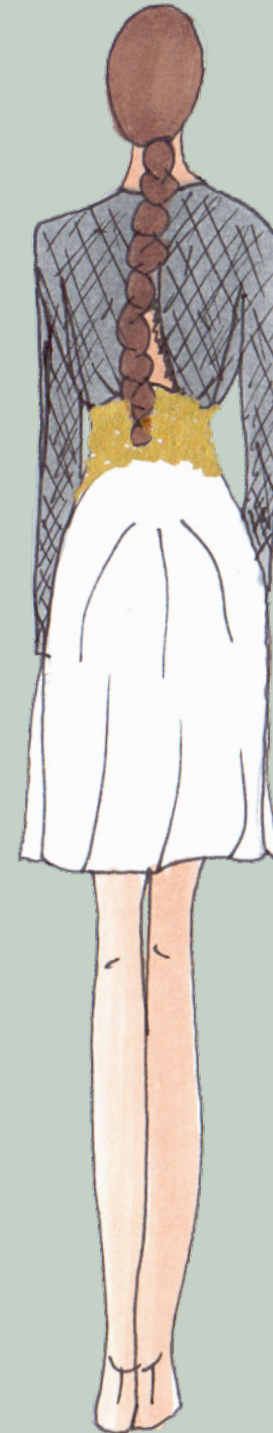
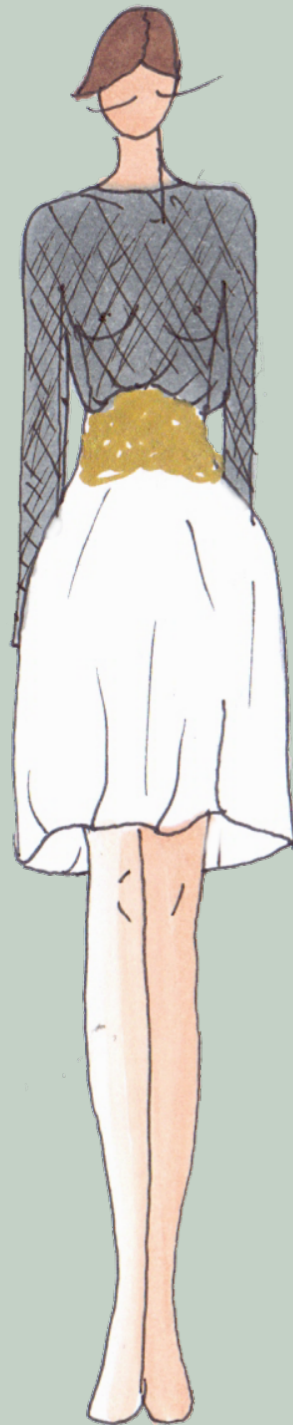


Silhouette 10

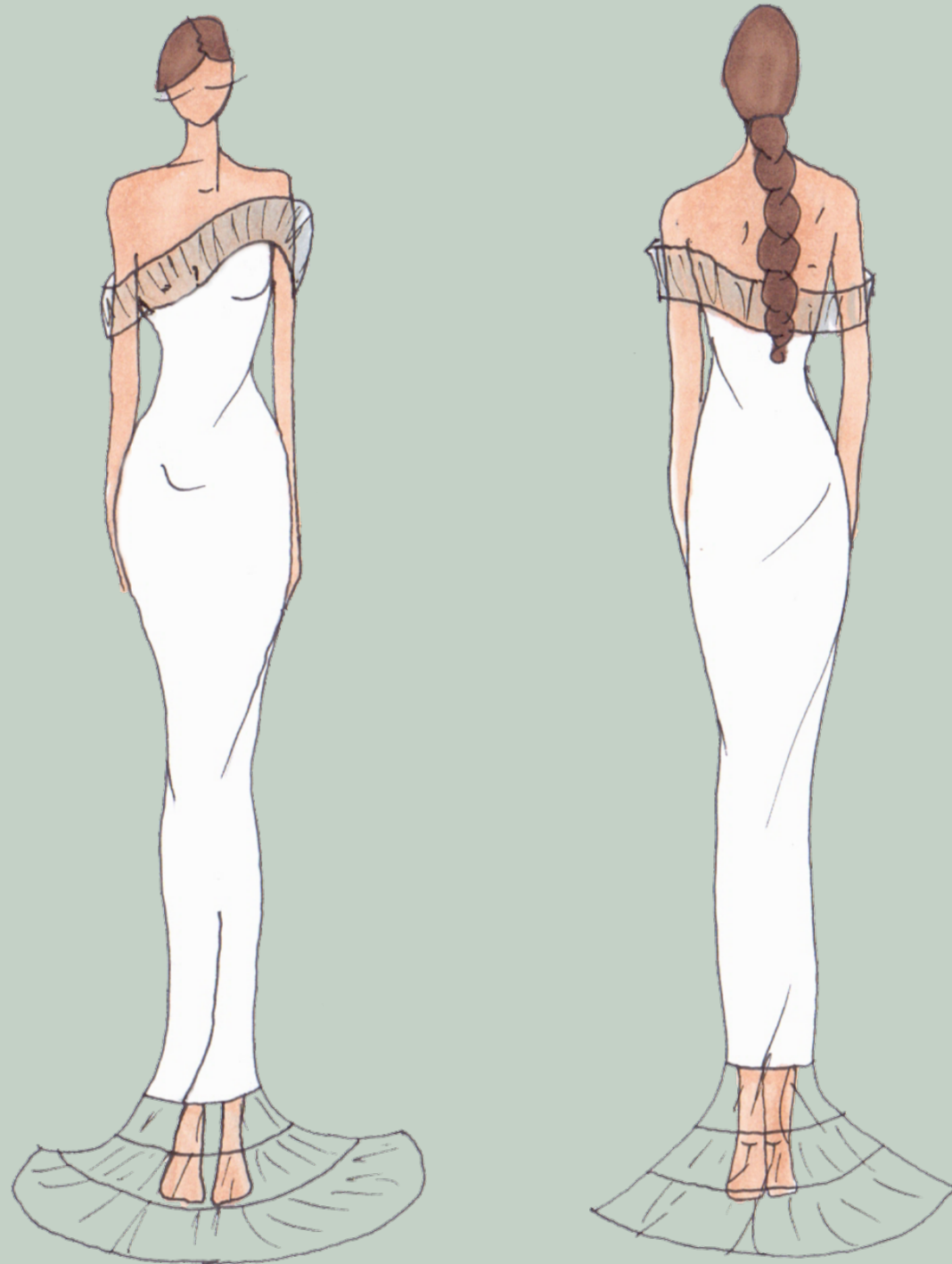


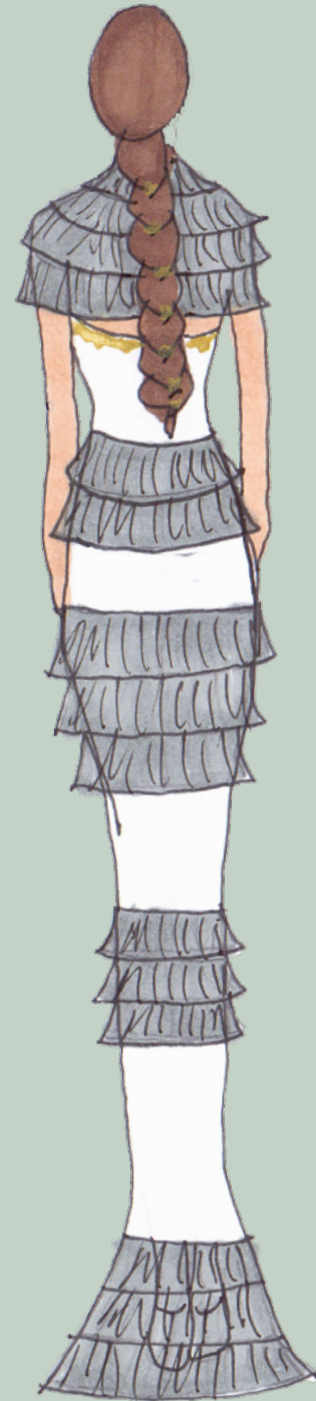
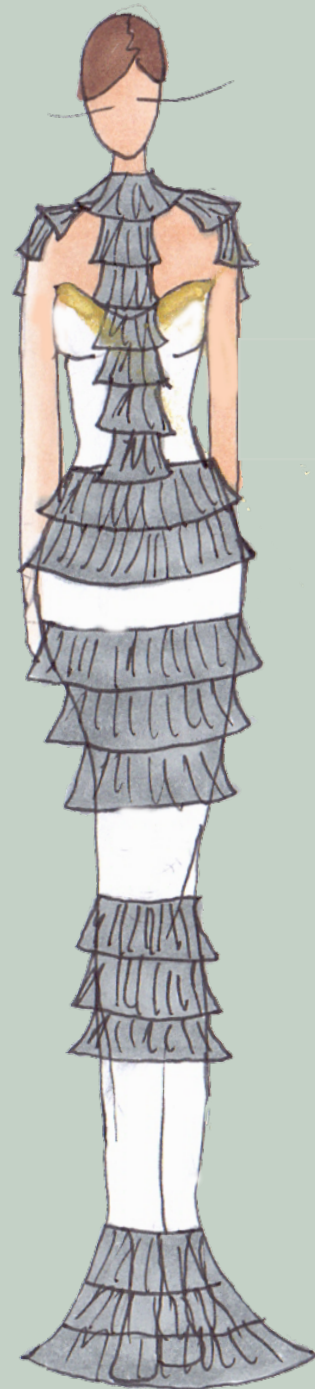
STYLE 13&14

Silhouette 11



STYLE 15&16





Silhouette 14



STYLE 19

Silhouette 15



STYLE 20

Silhouette 16



STYLE 21

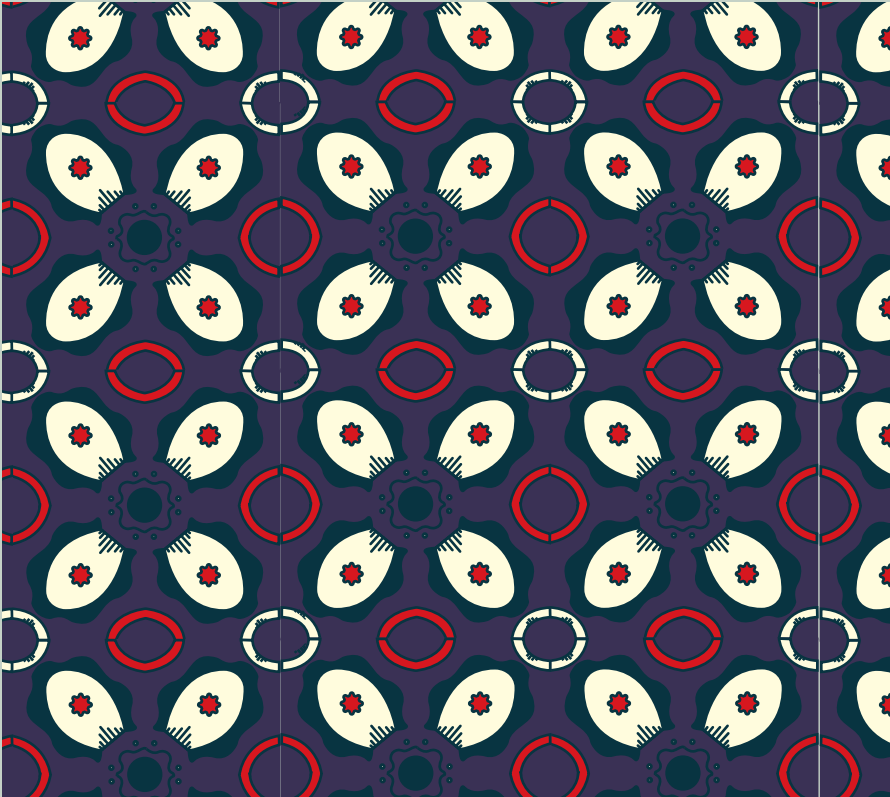
Silhouette 17



STYLE 22



Print #1



My first print is an all-over print, and is used in two styles. I created it in Illustrator, and kept my dogma about curved and wavy lines. I was very inspired from Valentinos Mime '15 collection, and I wanted the feeling of looking through a kaleidoscope, by making a repeat-pattern.

Print designs

Print #2



My second print is a placement print. I always liked the idea of painting with gold, so when I found out that you can paint with golden foil on fabric, I had to have it in the collection. The picture is from an experiment I made, but it is going to be unique, because I am going to paint it on every patternpeace. The print is used on 5 styles.

Overview

